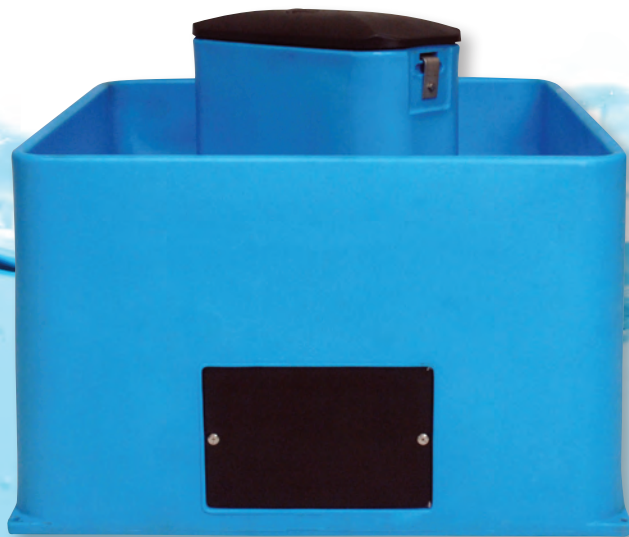


MIRACO

Livestock Water Systems

"Originators of insulated poly waterers"



BIGspring
Livestock Waterers

Lil spring
Multi-Purpose Waterers

EQUIFount
Horse Water Systems

E-Fount
Energy Efficient Waterers

MiraFount
Energy Free Waterers

*Quality Waterers...
Personalized Service...*

MIRACO

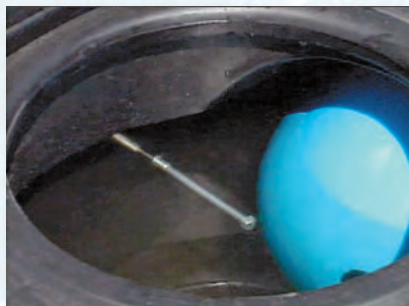
Livestock Water Systems

TABLE OF CONTENTS

PRODUCT DETAILS	2-3
BALL CLOSURE/SWINE WATERERS	
E-Fount / General Livestock	4
E-Fount / Swine.....	5
MiraFount / Swine	5
MiraFount / Beef & Dairy Cattle	6-7
OPEN WATERERS	
EQUIFount / Equine.....	8
LilSpring / Equine	8
LilSpring / Sheep & Goats.....	8
LilSpring / General Livestock.....	9
BigSpring / Beef & Dairy Cattle	10-11
ACCESSORIES	Back Cover

Miraco's MiraFount Exclusive training device helps cattle find water fast!

Use the trainer bolt to hold the ball back out of the hole.



Features for all models:

- No sharp edges for safety
- Durable polyethylene construction stands up to livestock abuse – resists corrosion, chipping or cracking

BIGspring / Lil'Spring / MiraFount (Beef & Cattle) features:

- 5 year warranty
- 2" to 3" (5 cm to 8 cm) urethane foam insulation
- Molded base unit anchors (stainless steel anchor bolts included)
- Sloped, sealed bottoms for easier cleaning

Lil'Spring features:

- Removable dome for quick and easy access to valve area

MiraFount (Beef & Cattle) features:

- Extra insulation above the valve area
- Minimum head required
- Patented Miraco roll-away ball closures

MiraFount (Swine) features:

- Patented underside lid seal for energy-free watering
- Easy access to valve area
- Low profile drinking height profile for small pigs
- Large 10" (25cm) openings to accommodate market hogs and sows
- Seamless sidewall construction
- Stainless steel anchors and stainless steel bolts

EQUIFount features:

- Urethane foam insulation
- Minimum intrusion on stall space
- Four bolt installation
- Plumb from above or below
- Ample drinking space; plentiful water supply with minimal waste
- Large easy drain; no disassembly required
- Attractive design; several color options

E-Founts features:

- Most economical electric heat waterers available today
- All equipped with a 75 watt heat element and thermostat
- Only requires 4 kilowatts of electricity during a week of -25° F temperatures

E-Fount

Product #	Capacity	Gallons	Length	Width	Drinking/Overall Height	Specifications	Weight	Heat
3330-E	25 head dairy 50 head beef	15 (57 liters)	28" (71 cm)	26" (66 cm)	14" (35.5 cm)/21" (53 cm)	One 8.75" (22 cm) opening / 9" (23 cm) ball closure	57 lbs (26 kg)	75 watts
3340-E	100 head sheep	15 (57 liters)	28" (71 cm)	26" (66 cm)	14" (35.5 cm)/20" (51 cm)	Four 6" (15 cm) openings / 7" (18 cm) ball closures	57 lbs (26 kg)	75 watts
3390-E	60 head dairy 150 head beef	44 (166 liters)	43" (109 cm)	29" (73.5 cm)	20" (51 cm)/27.5" (70 cm)	Two 10" (25.5 cm) openings / 10.75" (27 cm) ball closures (removable end panels)	129 lbs (58.5 kg)	75 watts
3465-E	40 head dairy 100 head beef	20 (76 liters)	36" (91.5 cm)	24" (61 cm)	18" (45.5 cm)/25.5" (65 cm)	Two 9.5" (23 cm) openings / 10" (25.5 cm) ball closures	79 lbs (36 kg)	75 watts
3345-E	30 head dairy 75 head beef	30 (112 liters)	29" (73.5 cm)	31" (79 cm)	18" (45.5 cm)/26.5" (67 cm)	One 10" (25.5 cm) opening (removable top)	95 lbs (43 kg)	75 watts
3354-SE	90 head dairy 200 head beef	70 (265 liters)	57.5" (146 cm)	32.5" (82.5 cm)	19" (48 cm)/27" (68.5 cm)	Four 9.5" (23 cm) openings / 10.75" (27 cm) ball closures (convertible)	152 lbs (69 kg)	75 watts
3410-E	50 sows 100 market hogs	6 (27 liters)	34" (86 cm)	19" (48 cm)	16" (40.5 cm)/16.5" (42 cm)	Two lift up lids/ 10" (25.5 cm) openings	57 lbs (26 kg)	75 watts
3410-4E	100 sows 200 market hogs	15 (57 liters)	34" (86 cm)	36.5" (93 cm)	16" (40.5 cm)/16.5" (42 cm)	Four lift up lids/ 10" (25.5 cm) openings	98 lbs (44.5 kg)	75 watts

MiraFount

Product #	Capacity	Gallons	Length	Width	Drinking/Overall Height	Specifications	Weight	Heat
3345	30 head dairy 75 head beef	30 (112 liters)	29" (73.5 cm)	31" (79 cm)	18" (45.5 cm)/26.5" (67 cm)	One 10" (25.5 cm) opening / 10.75" (27 cm) ball closures	95 lbs (43 kg)	N/A
3330	25 head dairy 50 head beef	15 (57 liters)	28" (71 cm)	26" (66 cm)	14" (35.5 cm)/21" (53 cm)	One 8.75" (22 cm) opening / 9" (23 cm) ball closure	59 lbs (27 kg)	N/A
3465	40 head dairy 100 head beef	20 (76 liters)	36" (91.5 cm)	24" (61 cm)	18" (45.5 cm)/25.5" (65 cm)	Two 9.25" (23 cm) openings / 10" (25.5 cm) ball closures	79 lbs (36 kg)	N/A
3390	60 head dairy 150 head beef	44 (166 liters)	43" (109 cm)	29" (73.5 cm)	20" (51 cm)/27.5" (70 cm)	Two 10" (25.5 cm) openings / 10.75" (27 cm) ball closures (convertible)	126 lbs (57 kg)	N/A
3354-S	90 head dairy 200 head beef	70 (265 liters)	57.5" (146 cm)	32.5" (82.5 cm)	19" (48 cm)/27" (68.5 cm)	Four 9.5" (23 cm) openings / 10.75" (27 cm) ball closures (convertible)	152 lbs (69 kg)	N/A
3370-S	120 head dairy 200 cow/calf units 250 head beef	100 (378 liters)	57.5" (146 cm)	45.5" (115.5 cm)	20" (51 cm)/28" (71 cm)	Six 9.5" (23 cm) openings / 10.75" (27 cm) ball closures	216 lbs (98 kg)	N/A
3410	50 head sows 100 head market hogs	6 (27 liters)	34" (86 cm)	19" (48 cm)	16" (40.5 cm)/16.5" (42 cm)	Two lift up lids/ 10" (25.5 cm) openings	52 lbs (23.5 kg)	N/A
3410-4	100 head sows 200 head market hogs	15 (57 liters)	34" (86 cm)	36.5" (93 cm)	16" (40.5 cm)/16.5" (42 cm)	Four lift up lids/ 10" (25.5 cm) openings	95 lbs (43 kg)	N/A

EQUIFount

Product #	Capacity	Gallons	Length	Width	Drinking/Overall Height	Valve	Weight	Heat
1100 Corner Mount	N/A	N/A	16" (40.5 cm)	16" (40.5 cm)	14" (35.5 cm)	N/A	22 lbs (10 cm)	22 watts
1200 Wall Mount	N/A	N/A	16" (40.5 cm)	16" (40.5 cm)	14" (35.5 cm)	N/A	22 lbs (10 cm)	22 watts
834-5 Insulated Extension Tube						N/A		

LilSpring

Product #	Capacity	Gallons	Length	Width	Drinking/Overall Height	Valve	Weight	Heat
2700	100 head sheep/goats	6 (23 liters)	28.75" (73 cm)	17.5" (44.5 cm)	14" (35.5 cm)/24.5" (62 cm)	N/A	40 lbs (18 kg)	250 watts
2800	30 head beef 30 head horses	4 (15 liters)	20" (51 cm)	16" (40.5 cm)	19" (48 cm)/27.5" (70 cm)	Miraco automatic plastic	40 lbs (18 kg)	250 watts
2900	60 head beef 60 head horses	6 (23 liters)	30.5" (77.5 cm)	16.5" (42 cm)	19" (48 cm)/27.5" (70 cm)	Miraco automatic plastic	48 lbs (22 kg)	250 watts
3000	30 head beef 30 head horses 50 head sheep	5 (19 liters)	24" (61 cm)	22" (56 cm)	15" (38 cm)/21.5" (55 cm)	Miraco automatic plastic	48 lbs (22 kg)	250 watts
3100	50 head dairy 100 head beef	8 (30 liters)	36" (91.5 cm)	22" (56 cm)	22" (56 cm)/27.5" (70 cm)	Miraco automatic plastic	75 lbs (34 kg)	250 watts
3200	75 head dairy 150 head beef	25 (95 liters)	48" (122 cm)	24" (61 cm)	24" (61 cm)/30" (76 cm)	Miraco automatic plastic	98 lbs (44.5 kg)	250 watts
3500	110 head dairy 225 head beef	40 (152 liters)	42" (106.5 cm)	42" (106.5 cm)	26" (66 cm)/32" (81 cm)	Miraco automatic plastic	145 lbs (66 kg)	500 watts

BIGspring

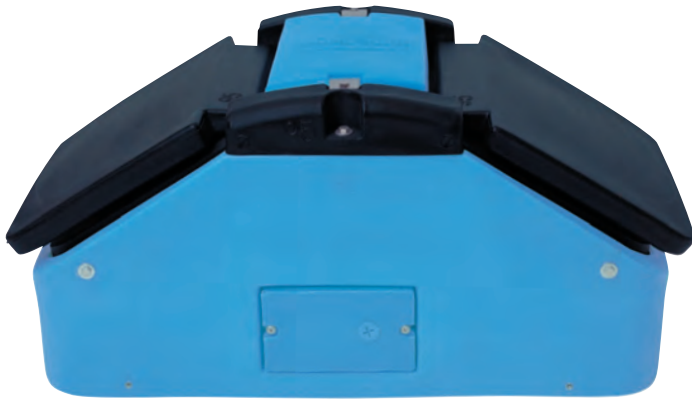
Product #	Capacity	Gallons	Length	Width	Drinking/Overall Height	Valve	Weight	Heat
6000	100 head dairy 250 head beef	60 (227 liters)	90" (228.5 cm)	33" (84 cm)	24" (61 cm)/32" (81 cm)	N/A	215 lbs	500 watts
6100	110 head dairy	60 (227 liters)	80" (203 cm)	36" (91.5 cm)	24" (61 cm)/31.5" (80 cm)	N/A	205 lbs	500 watts
6200	100 head dairy 200 head beef	60 (227 liters)	84" (213 cm)	22" (56 cm)	22" (56 cm)/29.5" (75 cm)	N/A	170 lbs	500 watts
6300	150 head dairy 300 head beef	110 (416 liters)	144" (366 cm)	22" (56 cm)	22" (56 cm)/29.5" (75 cm)	N/A	275 lbs	500 watts
6400	125 head dairy 250 head beef	90 (341 liters)	120" (305 cm)	22" (56 cm)	22" (56 cm)/30" (76 cm)	N/A	230 lbs	500 watts
6500	175 head dairy 350 head beef	130 (492 liters)	168" (427 cm)	22" (56 cm)	22" (56 cm)/30" (76 cm)	N/A	230 lbs	500 watts

GENERAL LIVESTOCK



SWINE

E-Founts are the most economical electric heat waterers available today.



3410-E



3410-4E

All E-Founts are equipped with a 75 watt heat element and thermostat.

E-Founts only require 4 kilowatts of electricity during a week of -25° F temperatures.



3410



3410-4

SWINE

ENERGY FREE WATERERS



BEEF & DAIRY CATTLE



3330



3465



3345



3390



BEEF & DAIRY CATTLE

3354-S



3370-S



Cattle love the roll-away ball feature. Nothing in their face while drinking, unlike the competition's design where they have the disc constantly in their face.



Removable top end panels help get new cattle started fast or when you need more capacity for a few extra head.

OPEN WATERERS

1100 Corner Mount



New Color Options

- Gray
- Blue(Standard)
- Black
- Hunter Green
- Beige
- Red



1200 Wall Mount



EQUINE

834-5 Insulated Extension Tube

Insulated tube allows water line to enter from below without freezer.

Rubber plug can be removed for access to water shut off valve



EQUINE / MULTI-PURPOSE

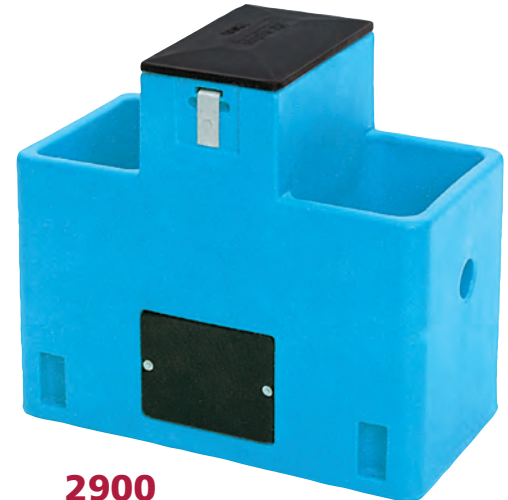


2800



TOP VIEW - LID REMOVED

200 psi hose w/shut off valve included



2900



SHEEP & GOATS / MULTI-PURPOSE



3" front drain outlet for outside use



3000



2700

General Livestock



3100



3200



3500

- Large access panel for easy access to valve area
- 3" offset drain
- Access panels at both ends
- Installs easily on most existing concrete pads
- Spring load clips allow entry to valve area - no wrenches required
- Constant flow available

- 168" drinking space
- Quick release valve cover
- Diagonal valve compartment lets more cattle drink
- 24" hook-up hose with shut off valve
- 2 bottom drains



Top view:
Diagonal valve compartment lets more cattle drink.



OPEN WATERERS



6100



- Water spray for attracting new cattle for water
- 3" drain hole with rubber plug for rapid cleaning
- Removable dome for easy access to valve area
- Spring-loaded clips - no wrenches required
- End Panel access
- Can be constant flow at 30 or 60 gallon level

BEEF & DAIRY CATTLE



Bottom drain available on all Big Spring Miraco waterers



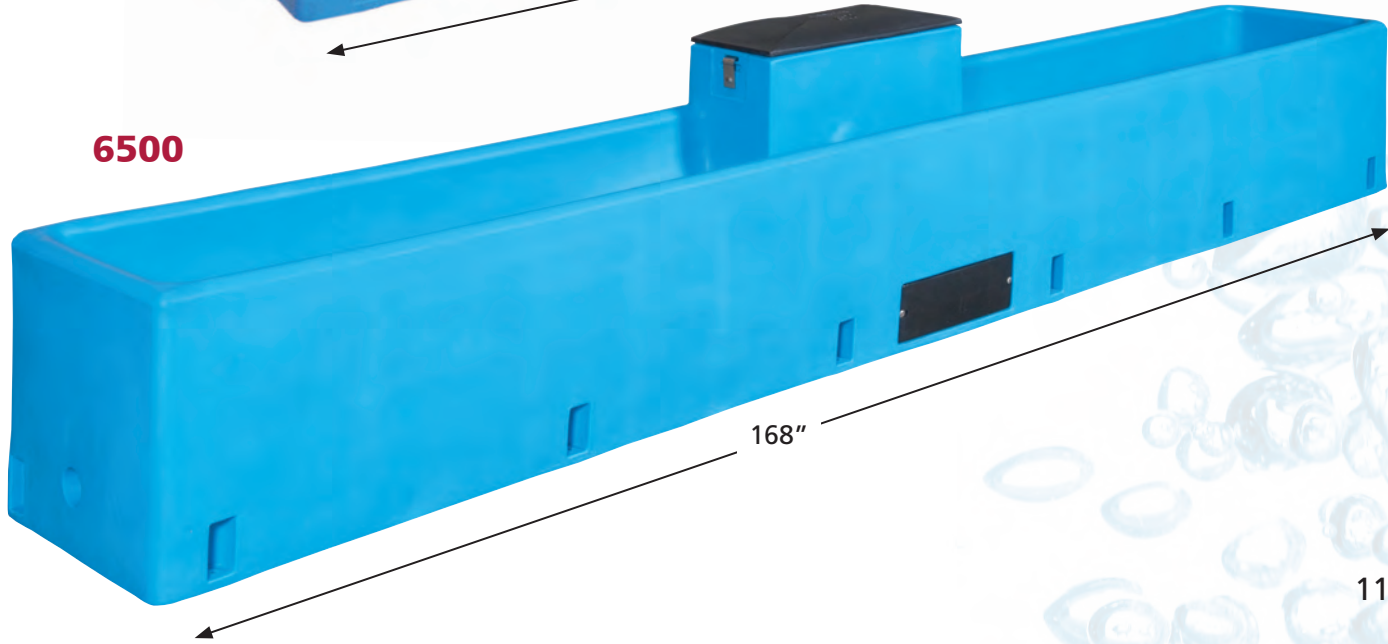
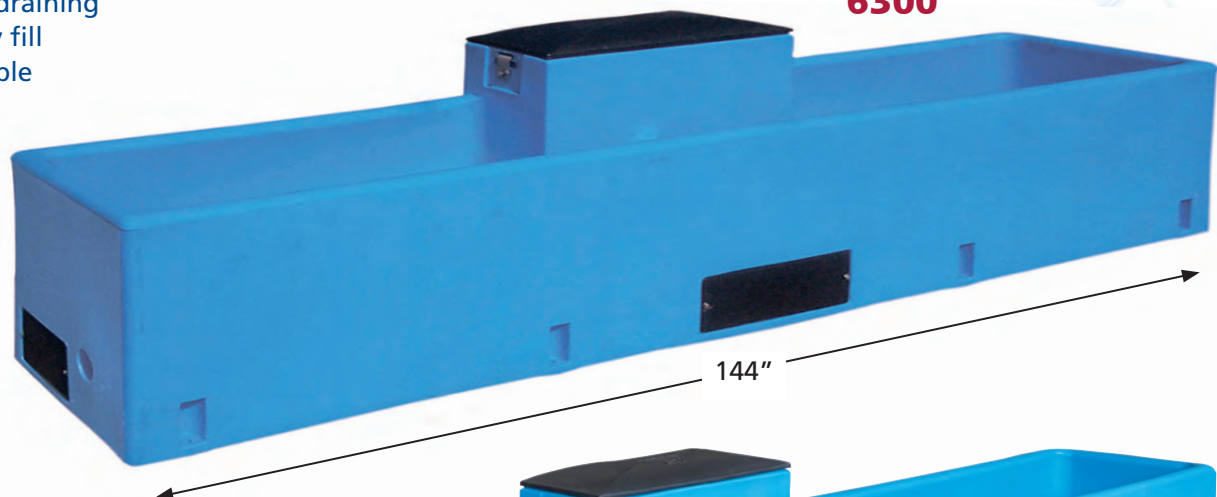
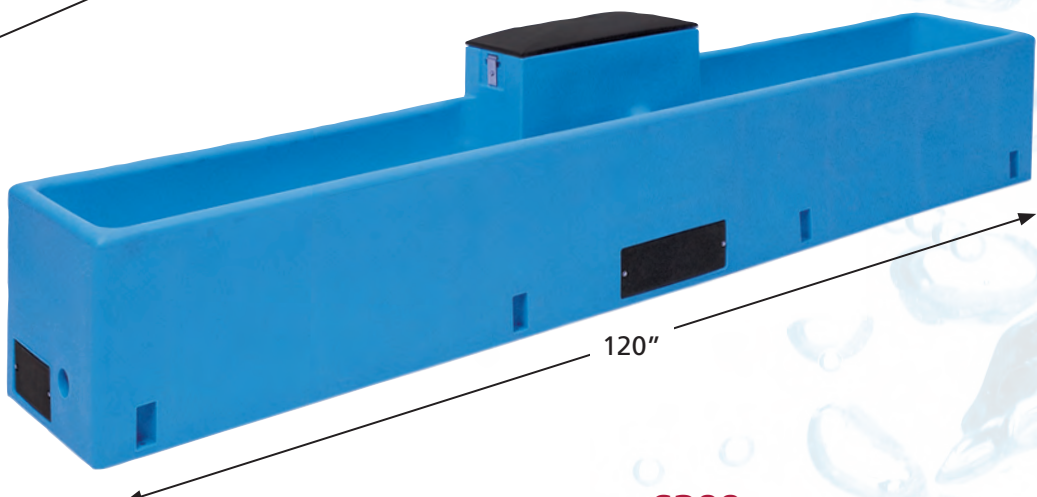
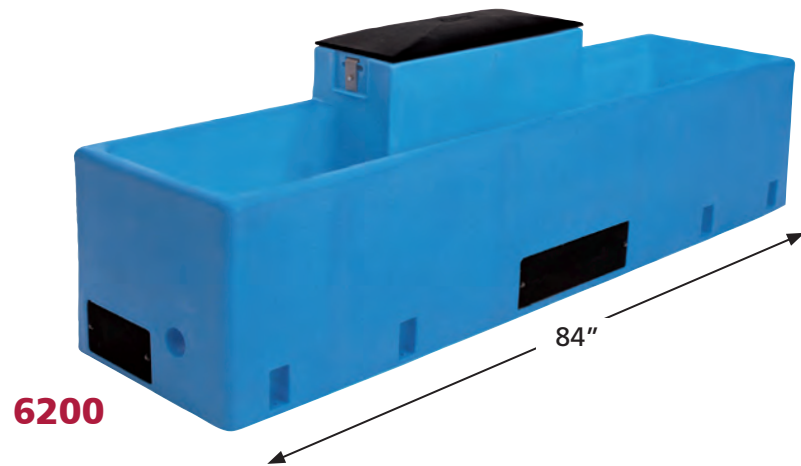
6000

- Flat back design fits flush with wall
- Center between stalls or place one on each end of single stalls
- Pour foundation with a curve for easier cleaning
- No wrenches required for valve compartment access
- Rubber gasket for airtight dome seal



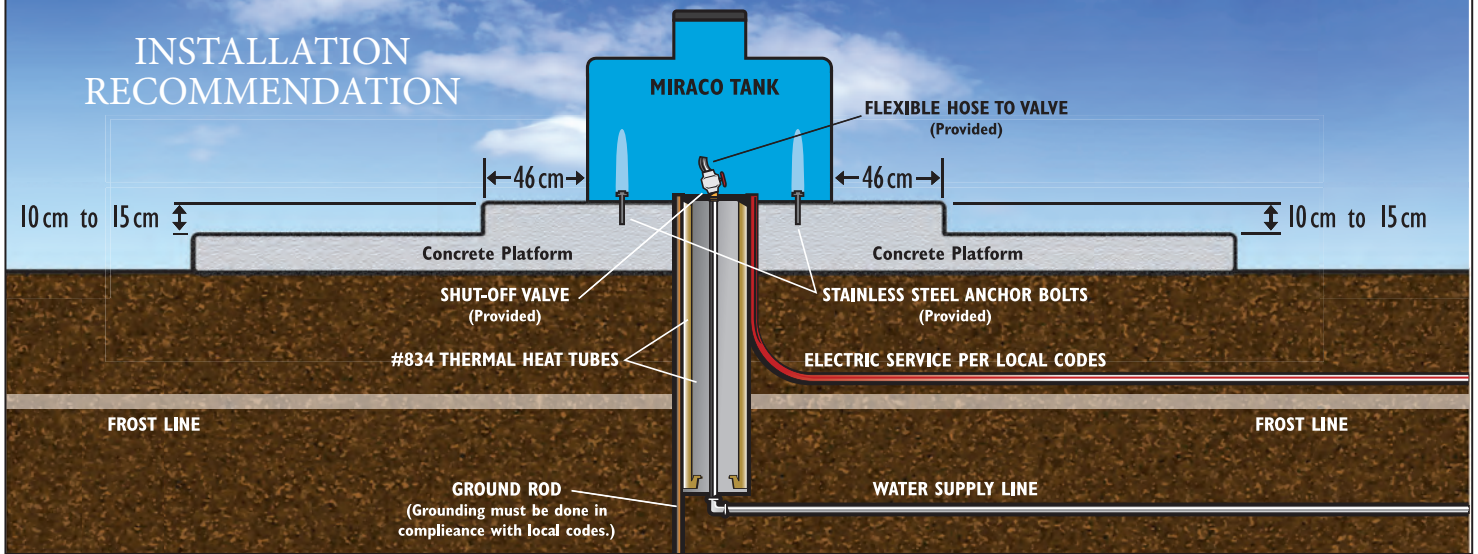
For cleaner water, neckrail required to prevent cattle from standing in the water. 10"-12" stem wall recommended.

BEEF & DAIRY CATTLE



- Designed for free stall barns
- Flat back design for flush fit with wall or panel
- Center between stalls
- No wrenches required for valve compartment access
- Rubber gasket for air-tight dome seal
- Three access panels
- Two large 3" drains; severe slope for quick draining
- Optional gravity fill assembly available

INSTALLATION RECOMMENDATION



ACCESSORIES

UNDERGROUND SHUT OFF KIT



Part No.
#399-5
with Drain Back

834 INSULATED HEAT TUBES



Highly insulated tube shields incoming ground water from cold as it passes through the frost level.

Polyethylene construction ensures years of trouble-free use. One 30-inch tube and 3 feet of 12-inch plastic drainage tile provides a sufficient heat well in most locations. For northern locations, two 30-inch heat tubes may be required.

Outside Dimensions
14" X 30" (36 x 76 cm)
2" Insulation (5 cm)

Weight
18 pounds (8 kg)

AUTOMATIC VALVES

Part No.	GPM	Pressure
#336 (Black)	14	Low 5 – 40 psi
#521 (Red)	12.5	High 40 – 80 psi
#519 (Blue)	6	High 80 – 90 psi



HEATERS 1 year warranty

Available in 120 Volt or 240 Volt
250 Watts and
500 Watts

HighLimit safety fuse

Teflon coated aluminum

New thermostat technology



Design allows heater to set 1/2" above the bottom for better heat dispersion.

Part No.
#543 with built-in thermostat
250 Watt Immersion Heater

#543-5 500 Watt Immersion Heater
(110 Volt or 220 Volt)

Part No. Thermostat Controlled
#919-5 Cable Line Heater
(110 Volt or 220 Volt)



MIRACO

Livestock Water Systems

P.O. Box 686
Grinnell, Iowa 50112
Phone (641) 236-5822
Fax (641) 236-3341
Toll-Free (800) 541-7866
Visit our website: www.miraco.com

Authorized Dealer