

Lil'fount *filling procedure*

Multi-Purpose Waterers



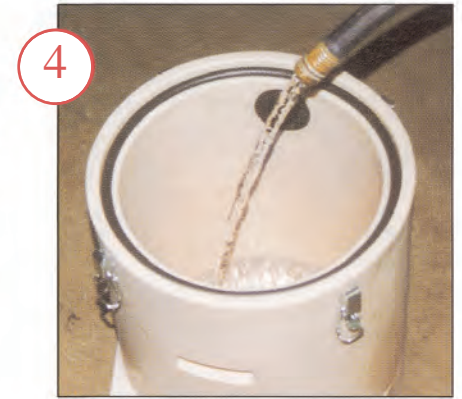
1 Remove plug from inside unit or top storage hole.



2 Insert plug into fill hole.



3 Remove lid.
(First time use: stretch rubber "o" ring until it fits easily into the groove.)



4 Fill tank.
(Keep rubber gasket wet or use petroleum jelly for best seal.)



5 Place lid on top of waterer so the handle (plug end) is even with the edge of the label. Push down evenly all around and twist on.



6 Lid will twist approximately 1/4 turn until tight.



7 Remove rubber plug and allow water to flow into dish.



8 Replace plug in the storage hole located in the lid for future use.



Lil' Fount features all polyethylene construction with polyurethane foam insulation. Its poly exterior makes cleaning a breeze. There is no buildup of bacteria or algae. The bowl refills automatically, with no moving parts. Nothing cools off a hot animal faster than cool, clean water to drink.



Fresh, clean,
abundant
water



is very important
to all animals. The

Lil' Fount

has a 5 gallon
reservoir and is
insulated with urethane
foam insulation.

*During hot weather
add ice cubes with
every fill. This will*



allow the animal to get

cool, fresh



water with
every drink.

The sealed reservoir
keeps water free of
bugs, algae and dirt.



Optional 250 watt heater assembly

The unique features of this waterer make
it owner friendly and user friendly.
Easy fill, easy cleaning.

Always keep cool, clear water available to
all animals. Especially during hot weather.



A Division of Ahrens Agricultural Industries Co



P.O. Box 686 Grinnell, Iowa 50112

Phone (641) 236-5822 Fax (641) 236-3341

Toll-Free (800) 541-7866 E-mail miraco@miraco.com

It's Automatic. It's a *Miraco!*